

Marine Power Display

A Caterpillar® Electronic Engine Monitoring System



The **Cat Marine Power Display (MPD)** is a self-contained engine monitoring and display system that is simple to install and provides more information to the operator than previously available single-engine monitoring systems.

- High-resolution, 320 x 240 dots-per-inch image.
- Transflective screen improves readability by reflecting more or less light as ambient light conditions change.
- Fully graphic LCD display screen – as opposed to a fixed display – allows use of optional screen builder software to customize screen formatting.

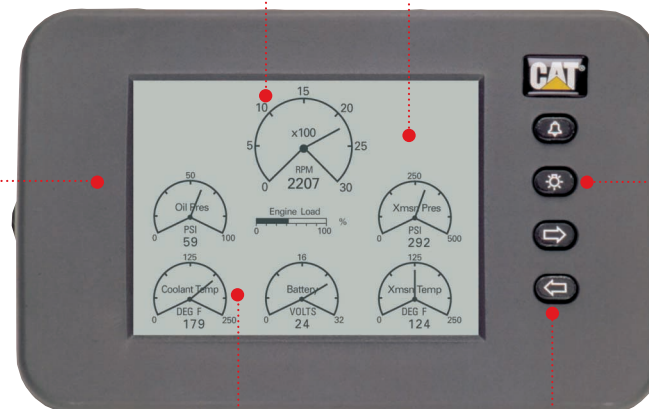
The custom screen option allows up to three different operators to configure a total of 15 different screen formats to suit their individual preferences.

Supports both J1939 and J1587 (limited) data link protocols, allowing flash programming of software and use of Cat Electronic Technician diagnostic tools.

Display brightness is fully adjustable to cover all operating conditions, from night to full sun.

- Screen builder software is compatible with Windows 95/98/NT 4.0 and Windows 2000 PC operating systems.
- Flash programming from user's PC (with Cat Electronic Technician service tool) to MPD provides fast software updates and use of custom screens.
- System design allows future expansion, via Cat ET Winflash and Commdapter II, plus added features through software updates.
- Operates on both 12 and 24 volt systems.

Electronics and internal audible alarm are fully pressure-sealed to eliminate moisture and salt spray entry.



Control buttons for audible alarm shutoff and diagnostics windows, screen backlighting adjustment, and screen scrolling are indicated by SAE standard icons.

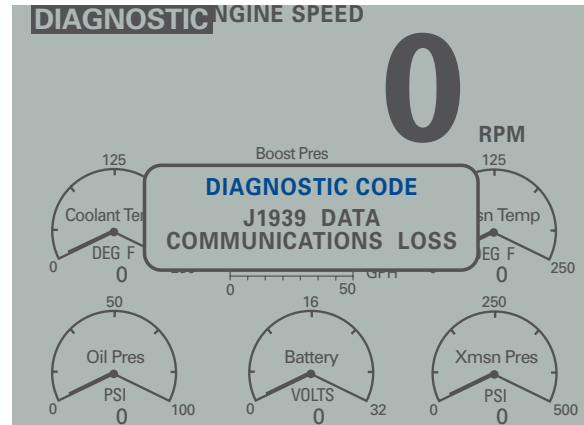
Mechanical buttons are sealed separately from internal electronics, for improved environmental protection.

Installation facts:

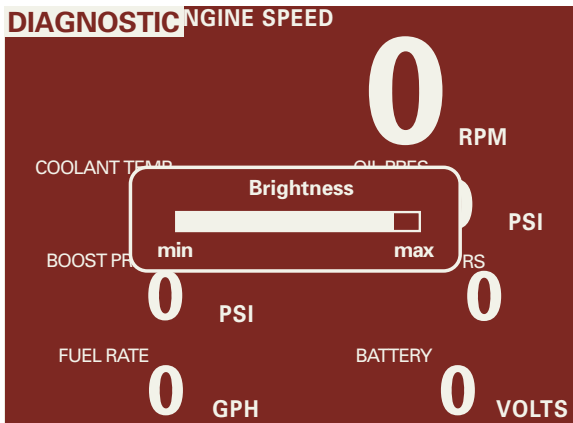
- The Cat Marine Power Display (MPD) is compatible with all currently available Cat electronically controlled marine engines from the 3126B to the 3500B series.
- One monitor is needed for each Cat electronic engine.
- A single high-speed, 2-wire data link carries all engine and transmission information from the engine electronic control module to the monitor.
- Compact overall size 9" (228.68 mm) wide; 5.82" (147.93 mm) high.
- Up to six different MPD locations can be supported.
- Marine Power Display operator's guide and MPD Builder software are available, LEBM0189, from your local Cat dealer.
- Screen customization requires the installation of MPD Builder, LERM0436.



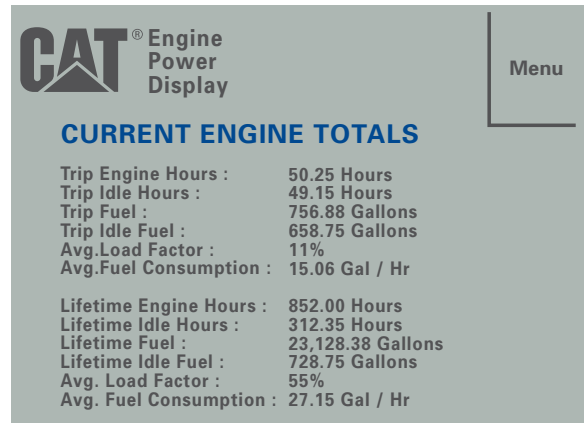
Configuration screen allows operator to select different users, English or Metric units, and in the future, vessel speed measurement in either knots, miles per hour, or kilometers per hour. Screen format options include gauge (shown on cover), digital, or bar graph.



When an engine/transmission problem is detected, an alarm sounds, a text window briefly describes the problem, and a "diagnostic" flag appears on the screen until the problem is resolved.



Double-edge lit red backlighting provides excellent night viewing.



Current trip totals and lifetime totals for operating hours, fuel consumption, and load factor are available.